

Sharp Electronics GmbH, Nagelsweg 33-35, 20097 Hamburg

## Information to Customers

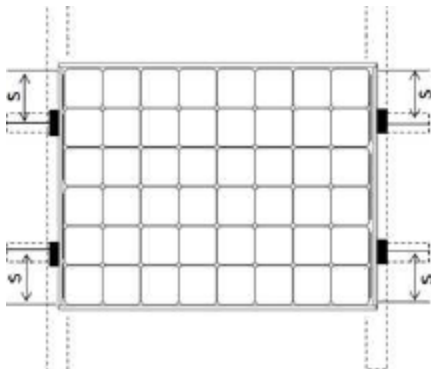
T: +49 (0) 40 / 2376 - 2650  
F: +49 (0) 40 / 2376 - 15 - 2920  
E: solarservice@sharp.eu  
W: www.sharp.eu

Hamburg, 09.02.2018

### Confirmation of mounting positions for SHARP Solar Modules

Dear Sirs,

Sharp Electronics GmbH confirms, that the below mentioned Module series could be mounted with clamps under below described conditions as an extension of the actual Installation Manual. Furthermore, the test load according Mechanical Load Test (MQT16) of EN61215-2 is 2.400Pa. The installation manual attached to the Modules remains valid. The Product- and Power Output Guarantee in the version at the date of purchase by the end user remains valid. Damages caused by mechanical overload are excluded from the Product Guarantee.



**Clamping on short side:**

**ND-RB, NU-SC**

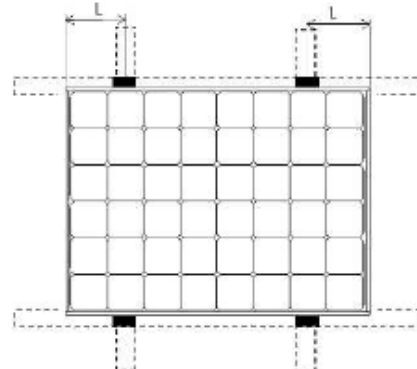
S between 0 and  $\frac{1}{4}$  \* Module width from the corner

**NU-RC, NU-RD**

S between 0 and 200mm from the corner

**ND-RJ, NU-RJ**

S between 0 and 247mm from the corner



**Clamping on long side:**

**ND-RB, NU-SC**

L between 0 and  $\frac{1}{4}$  \* Module length from the corner

**NU-RC, NU-RD**

L between 0 and 430mm from the corner

**ND-RJ, NU-RJ**

L between 0 and 465mm from the corner

With best regards

Peter Thiele  
President

Klaus Schaefer  
Manager Solar Service Support Department